

Instructions are given to install Stanford CoreNLP that will be used in the lesson/laboratory on NLP during the Summer School “DIGITAL TOOLS FOR HUMANISTS” 2019 in Pisa. Below we give details for installing on Windows and Mac laptops. In case you use Linux, please write an email to **rachele.sprugnoli[AT]unicatt.it** with information about the distribution you use (e.g. Debian, Ubuntu). Write to the same address for any problem encountered in the installation on Windows or Mac.

## 1.1 Stanford CoreNLP

The Stanford Core NLP requires a running Java 8 installation. To check the version of Java already installed on your laptop:

### Windows:

- launch the command prompt via *All Programs -> Accessories -> Command Prompt* and then type the command: `java -version`

### Mac:

- launch the *Terminal* window
- type the following in the *Terminal* window: `java -version`

If you don't have Java installed, the message “command not found” appears on the terminal otherwise the version of Java is displayed (e.g. java version "7.0.4").

If you have a version of Java < 8 or you need to install Java from scratch:

### Windows:

- go to <http://www.oracle.com/technetwork/java/javase/downloads/jre8-downloads-2133155.html>
- select the option “Accept License Agreement” for *Java SE Runtime Environment 8u171*
- download **jre-8u171-windows-x64.exe**
- run the program and follow the instructions

### Mac:

- go to <http://www.oracle.com/technetwork/java/javase/downloads/jre8-downloads-2133155.html>
- select the option “Accept License Agreement” for *Java SE Runtime Environment 8u171*
- download **jre-8u171-macosx-x64.dmg**
- open the dmg file and click on the icon to start the installation

Once Java 8 is installed, download the zip file containing CoreNLP here (do not install the latest version but the following one):

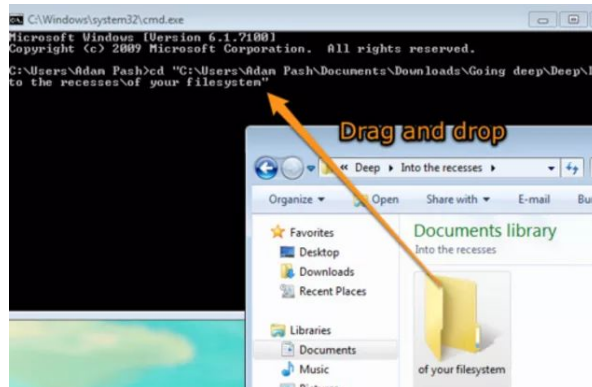
<http://nlp.stanford.edu/software/stanford-corenlp-full-2017-06-09.zip>

Unzip the zip file in a folder of your choice.

Try if the installation went well:

- launch the command prompt on **Windows** via *All Programs -> Accessories -> Command Prompt* or the *Terminal* on **Mac**

- type the command `cd` and then the location of the folder of CoreNLP. To add the path of the folder, drag and drop that folder into your command prompt



- type the following command (it should all be written in ONE line):  
`echo "hello world!" | java -mx3g -cp "./*" edu.stanford.nlp.pipeline.StanfordCoreNLP -annotators "tokenize,ssplit,pos,lemma" -outputFormat conll`

If CoreNLP has been installed correctly, the following output should appear after few seconds:

```

1   hello    hello    UH      _    _    _
2   world    world    NN      _    _    _
3   !         !        .       _    _    _

```